



Early Childhood Resource Center

IMPACT DATA

The mission of Early Childhood Resource Center is to promote the healthy development of young children by strengthening families, improving the quality of early learning experiences, increasing school and community readiness, and informing public policy.

CHILD CARE SERVICES PROVIDED

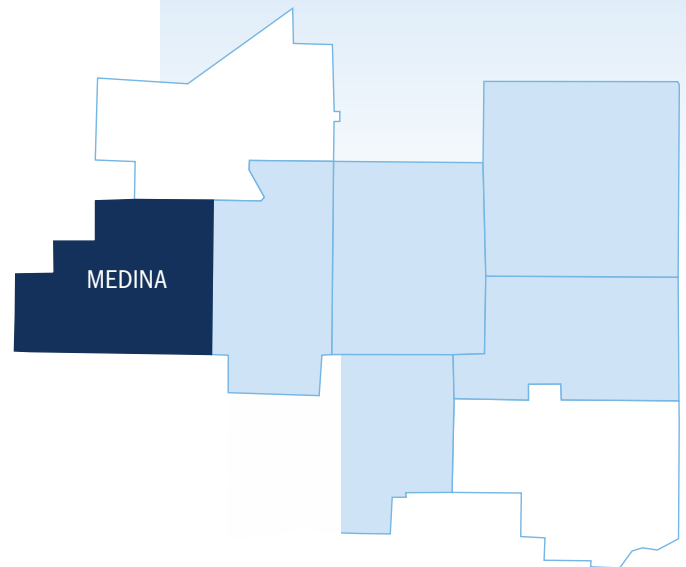
- Workforce recruitment, retention, and onboarding
- Staff coaching, training, and quality improvement
- Administrative business support and leadership development
- Credentialing and business start-up services
- Family engagement support

OTHER SERVICES PROVIDED

- Child care referrals
- Fatherhood services
- Parent education and ambassador services
- SPARK Kindergarten Readiness Program
- Foster, adoptive, and kinship resources

OUR SERVICE AREA

Early Childhood Resource Center is the state-appointed Child Care Resource and Referral agency serving Mahoning, Medina, Portage, Stark, Summit, and Trumbull counties.



EARLY CHILDHOOD
RESOURCE CENTER

A Ministry of the Sisters of Charity Health System



Published March 2025

CANTON Primary Office
1718 Cleveland Ave. NW
Canton, Ohio 44703

AKRON
37 N. High Street, Ste. D
Akron, Ohio 44308

BOARDMAN
6414 Market Street
Boardman, Ohio 44512

CONTACT US

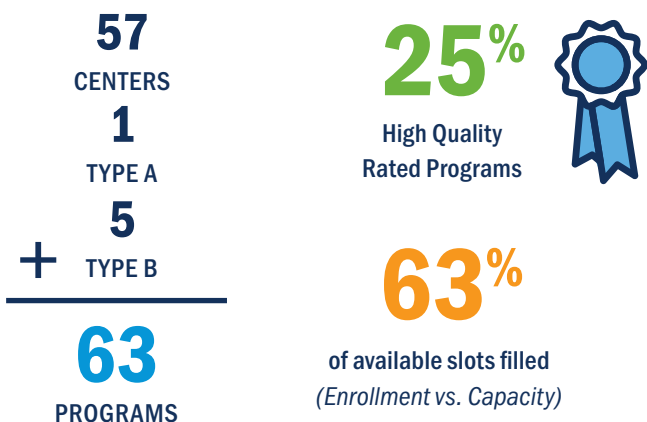
877.691.8521 | 330.491.3272 | ecresourcecenter.org



Medina County AT-A-GLANCE



LICENSED CHILD CARE PROGRAMS



CHILD CARE WORKFORCE

Reported Challenges

- **Staffing:** low qualifications, wages, lack of benefits, and turnover
- **Decreasing enrollment:** high cost of care, non-traditional hours needed

\$13.95

Mean Wage
(State of Ohio)

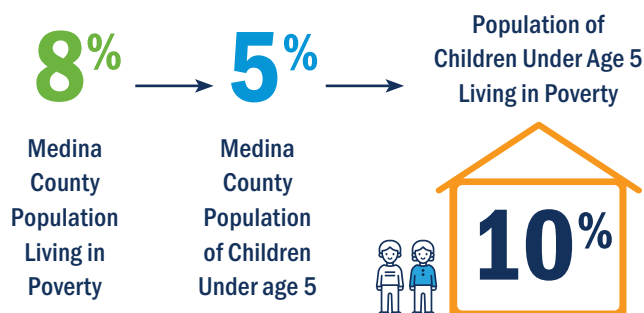
3%

Average
Turnover

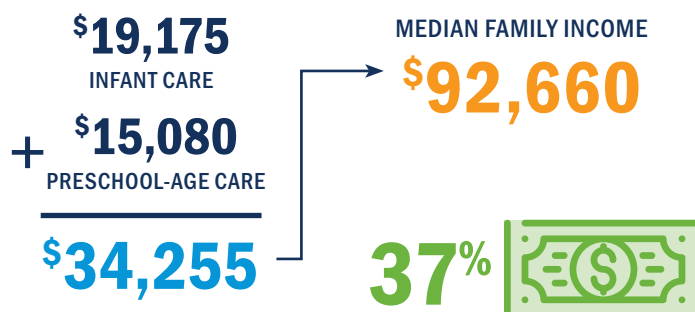
1,340

Total Medina County
Child Care Workforce

COUNTY DEMOGRAPHICS

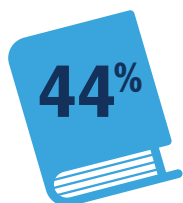


COST OF CHILD CARE



The Breakdown: A family with two children, making the median income in Medina County would spend **37% of their income on child care.**

OHIO KINDERGARTEN READINESS ASSESSMENT (KRA)

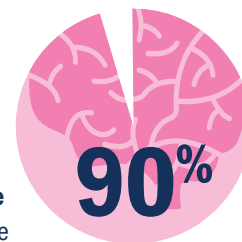


44% NOT DEMONSTRATING READINESS
(Percentage of students not on track)

The KRA is a tool used by the state to gauge each child's preparedness for kindergarten instruction based on Ohio's kindergarten standards, focusing on foundational skills and behaviors. At the beginning of each school year, children entering public and community school kindergarten programs, and those chartered non-public schools that have opted to participate, are given the assessment, which measures a child's knowledge and abilities in four areas of early learning: **1. Social foundations** (including social and emotional development and approaches toward learning); **2. Mathematics**; **3. Language and literacy**; **4. Physical well-being and motor development**

WHY INVESTMENTS MATTER

- **90% of brain development** takes place by age 5
- Investments in high quality care have a **13% return on investment**
- **Parents rely on high quality, affordable child care** to participate in the workforce



Investing in high quality early care and education boosts economic growth, increases workforce participation, enhances earnings, improves business productivity, and leads to better child outcomes.

Published March 2025

SOURCES: Ohio Department of Children and Youth; US Bureau of Labor Statistics; Ohio Department of Education and Workforce; United States Census Bureau; Groundwork Ohio; Surveys of Child Care Providers in Medina County, Ohio; The Heckman Equation

**EARLY CHILDHOOD
RESOURCE CENTER**

A Ministry of the Sisters of Charity Health System